



# MONTHLY MEMBERSHIP PROGRESS REPORT

District 11 E2

Results as of: 01/31/2018

GMT: STEVE ANTON

LOCATION MICHIGAN

GMT CA

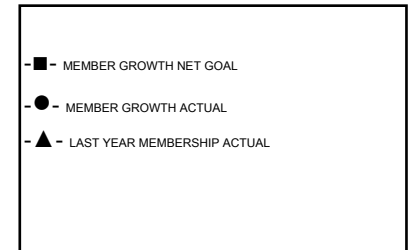
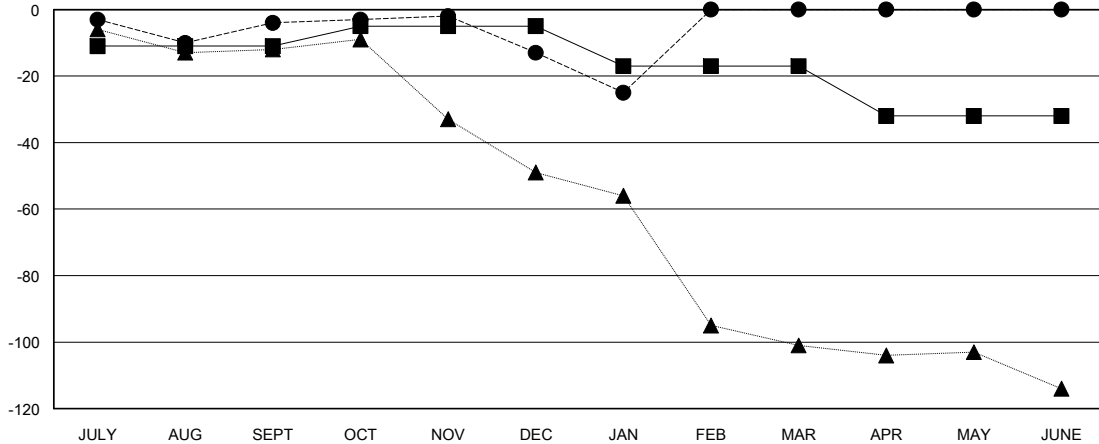
Clubs			
RESULTS FOR 2017-2018			
QUARTER	NEW CLUB GOAL	NEW CLUBS	DROPPED CLUBS
JULY/AUG/SEPT	0	0	0
OCT/NOV/DEC	1	0	0
JAN/FEB/MAR	0	0	0
APR/MAY/JUNE	0	0	0

Members			
RESULTS FOR 2017-2018			
QUARTER	MEMBER GROWTH NET GOAL	MEMBER GROWTH ACTUAL	DROPPED MEMBERS ACTUAL (including transfers)
JULY/AUG/SEPT	-11	23	25
OCT/NOV/DEC	6	16	22
JAN/FEB/MAR	-12	6	18
APR/MAY/JUNE	-15	0	0

GOALS AND ACTUAL NEW CLUBS CUMULATIVE



GOALS AND ACTUAL MEMBERS CUMULATIVE



DROPPED CLUBS: 0	15 CLUBS OF 33 ADDED 1 OR MORE NEW MEMBERS	<u>GENDER DISTRIBUTION</u>
		MALE 656 (72.57%)
		FEMALE 248 (27.43%)
		Women Percentage Fiscal Year Goal: 27%
<u>DROPPED MEMBERS</u>	<a href="#">CLICK HERE FOR CUMULATIVE MEMBERSHIP DATA</a>	TOTAL FAMILY UNIT MEMBERS 116
DECEASED 19		FAMILY MEMBERS PAYING HALF DUES 59
CLUB CANCELLED 0		
OTHER 46		
TOTAL 65		